

# HONDA INSTALLATION INSTRUCTIONS

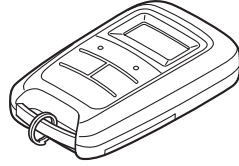
Accessory  
**REMOTE ENGINE  
STARTER TRANSMITTER**

Application  
**ALL APPLICABLE MODELS**

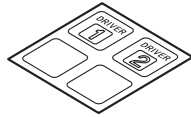
Publications No.  
**J9FG-CB-%**  
Issue Date  
**G9D 2014**

## PARTS LIST

Transmitter



ID label

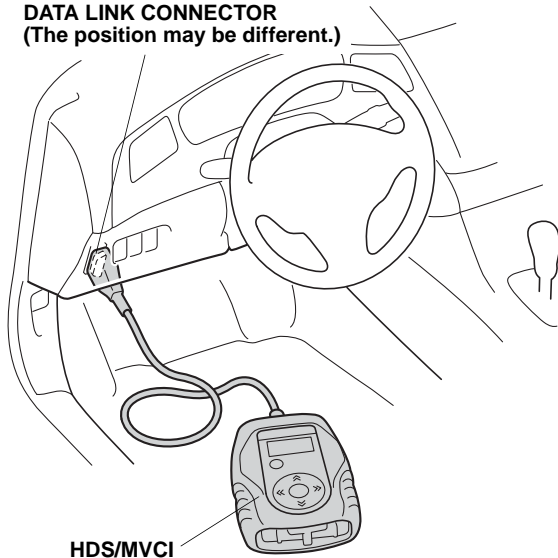


## Transmitter Registration

- Perform remote control transmitter registration first in accordance with the following steps.
- An additional with remote control transmitter can be registered (total two units).

1. Acquire the PCM Code from the Interactive Network.

**DATA LINK CONNECTOR**  
(The position may be different.)

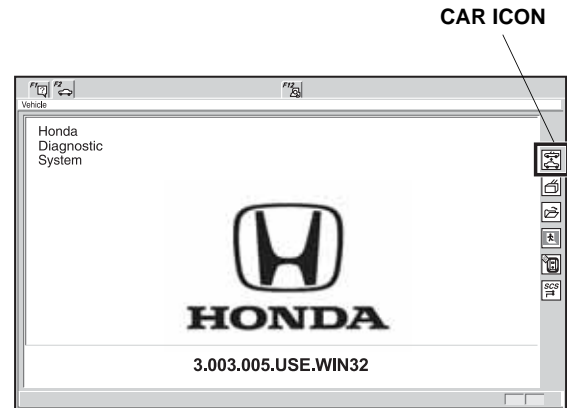


HDS/MVCI

QB32201AH

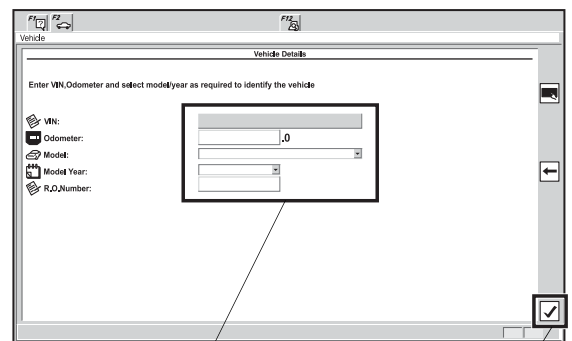
2. Connect the HDS/MVCI to the data link connector, then turn the ignition switch on.

3. Start the Honda Diagnostic System, then click the car icon.



QB40150AH

4. Input the VIN and other requirements in accordance with the HDS, then click the check button.

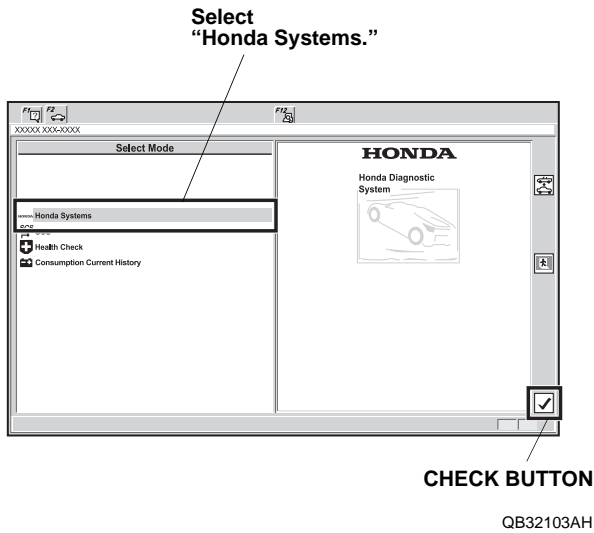


Input the VIN and other  
required information.

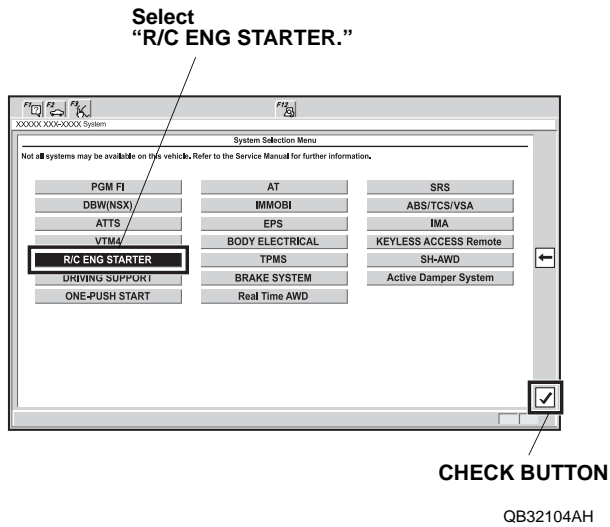
CHECK BUTTON

QB32102BH

- Select the "Honda System," then click the check button.

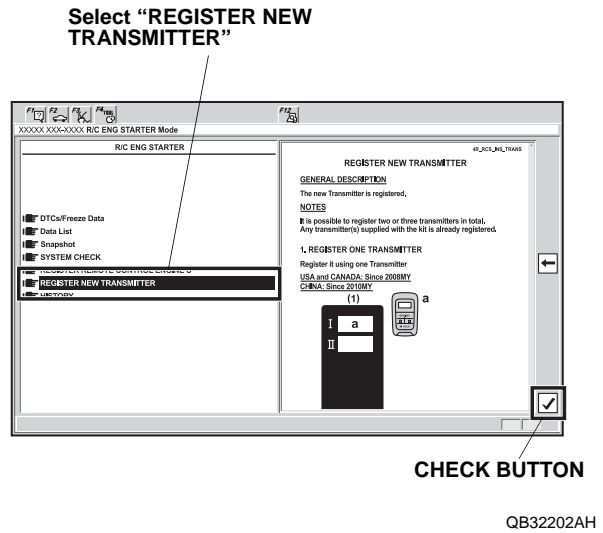


- Select the "R/C ENGINE STARTER" and click the check button.

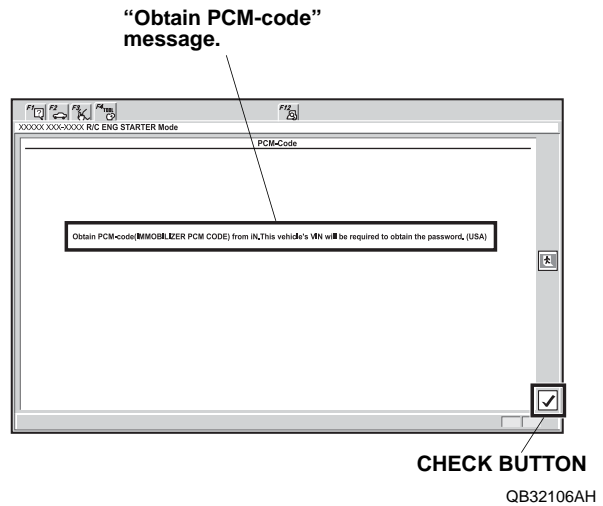


- Prepare the new transmitter to register.

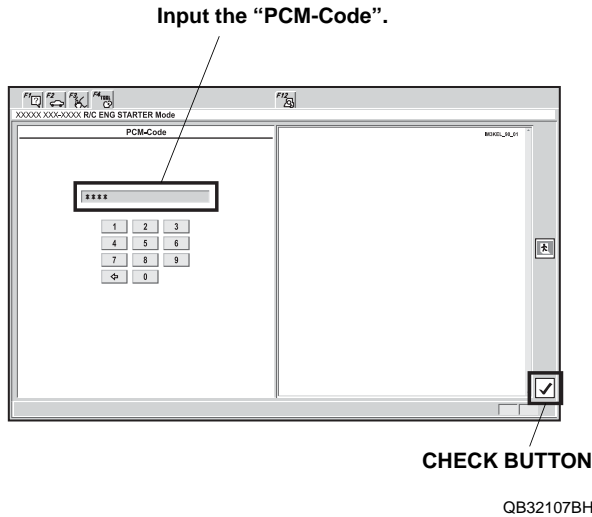
- Select the "REGISTER NEW TRANSMITTER," then click the check button.



- The following message will display: "Obtain PCM-code (IMMOBILIZER PCM CODE) from iN. This vehicle's VIN will be required to obtain the password. (USA)" Click the check button.



- Input the PCM code, then click the check button.  
NOTE: To ensure security, the PCM-code (password) is changed everyday, so it is impossible to register the remote control engine starter if the dates of the PCM-code acquisition and registration are different. The date of the HDS should also be the same.

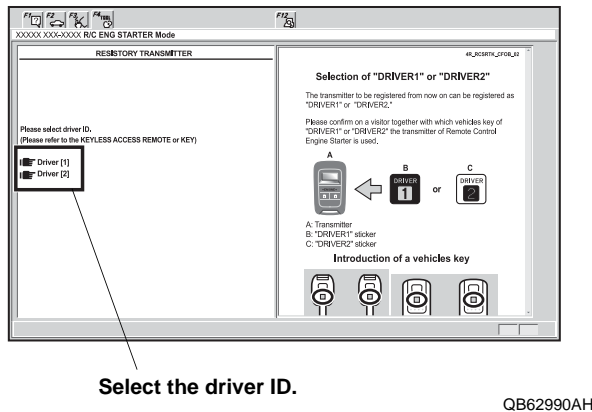


- Without Keyless Memory Settings: Go to step 13.

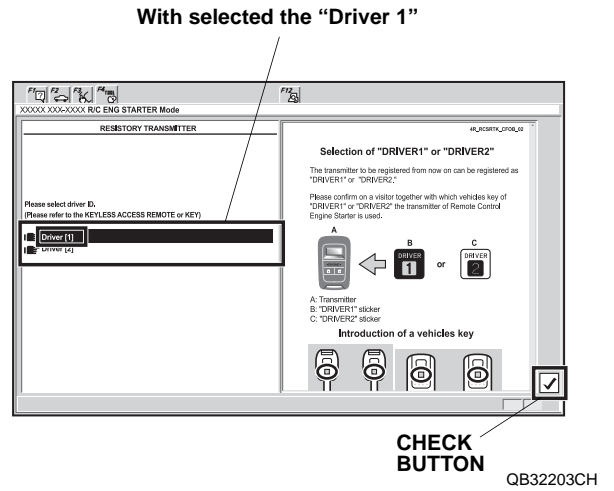
### With Keyless Memory Settings

Only some vehicles are equipped with the keyless memory settings. When following is not displayed, go to step 13.

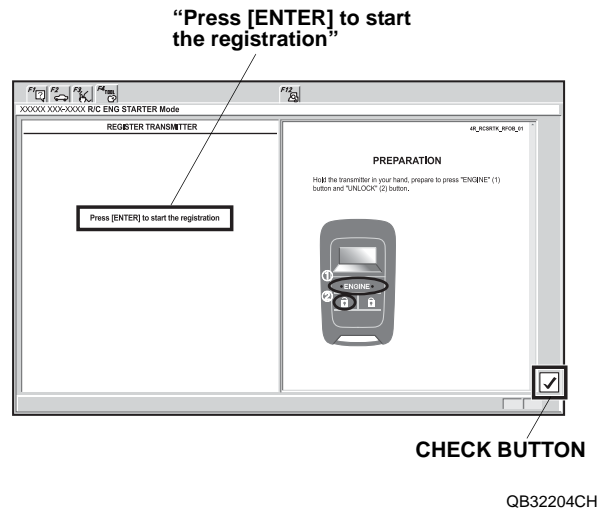
- Confirm on a visitor together with which vehicles key of "DRIVER 1" or "DRIVER 2" the transmitter of Remote Control Engine Starter is used. Select the "DRIVER 1" or "DRIVER 2".



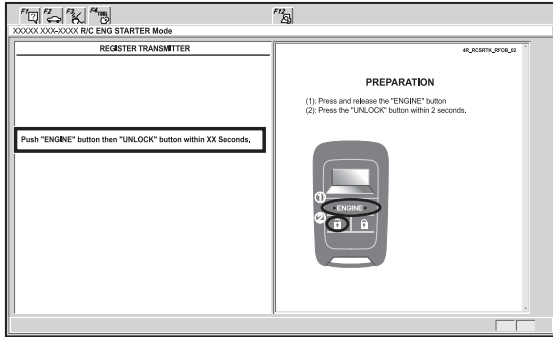
- Click the check button.



- The following message will display: "Press [ENTER] to start the registration." Click the check button.

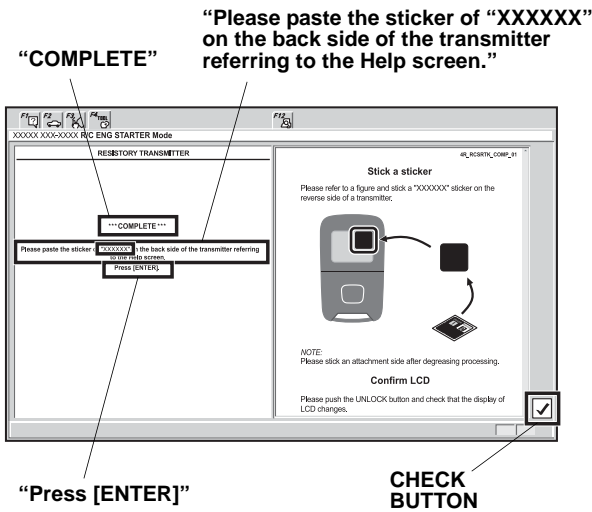


14. Within 15 seconds, press and release the “ENGINE” button then press the “UNLOCK” button within 2 seconds.



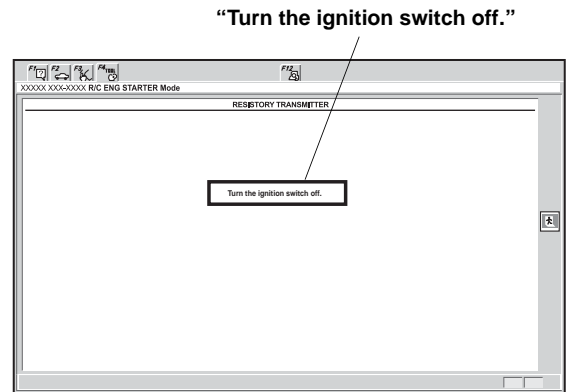
QB32207BH

15. The following message will display: “COMPLETE”, “Please paste the sticker (Driver 1, Driver 2, or Black) on the back side of the transmitter referring to the Help screen,” “Press (ENTER).” Click the check button.



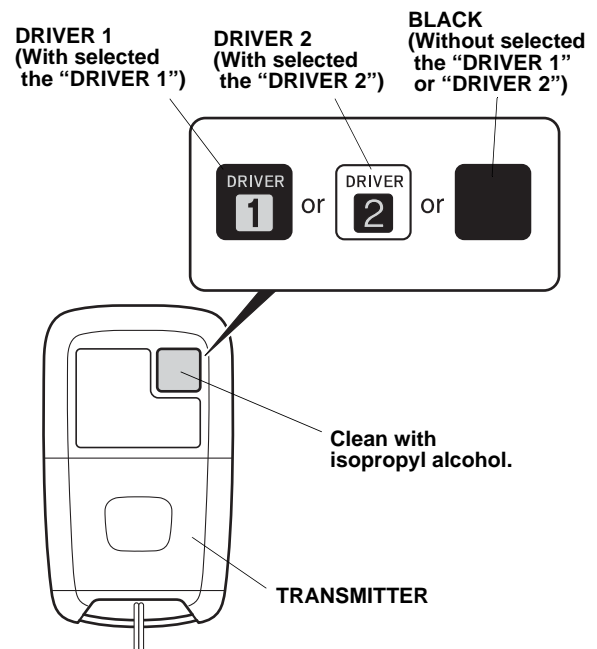
QB32205BH

16. The following message will display: “Turn the ignition switch off.” Turn the ignition switch off.



QB32206BH

17. Using isopropyl alcohol, clean the area where the ID label will attach.



QB32850AH

18. Attach the ID label (Driver 1, Driver 2, or Black) to the transmitter as shown.
19. Make sure that the engine starter operates properly with the transmitter and additional transmitter.